



EdiPax and the Pax Software Family; E-mail: info@edipax.com - <http://www.edipax.com>

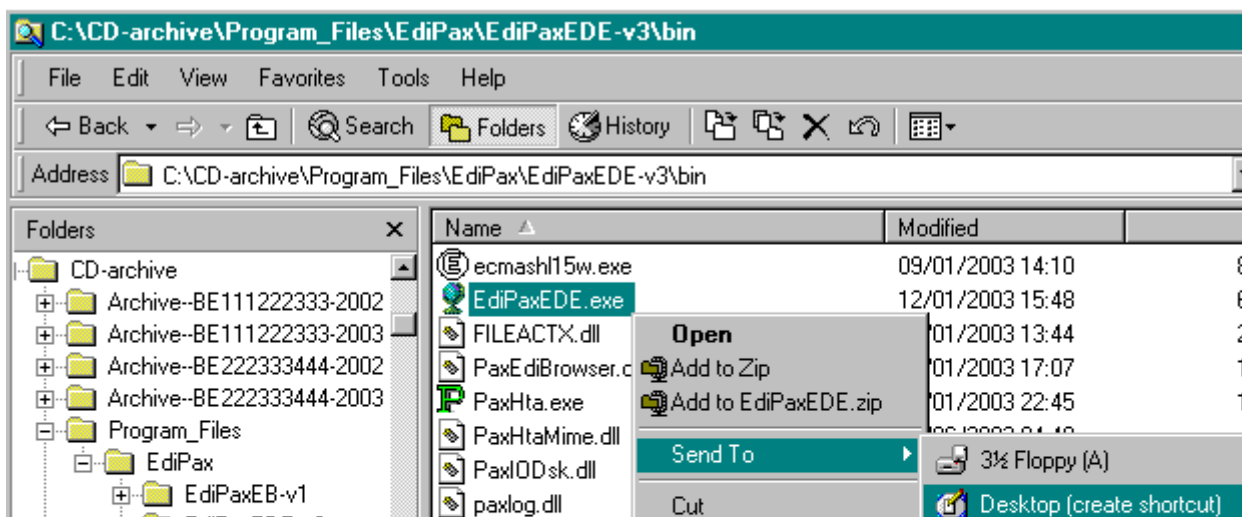
EdiPaxEDE-v3 - Features

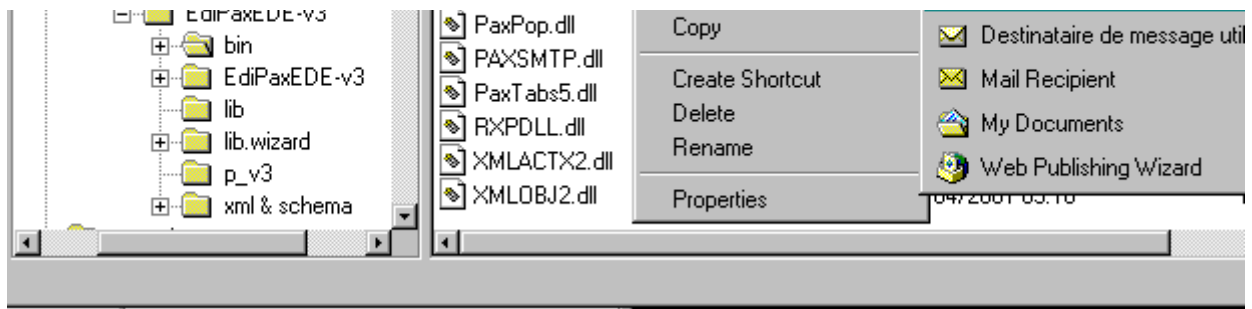
In short : EdiPaxEDE is a all purposes SOAP compatible email client - uses email in a professional way.

- It is a "function" based email system as opposed to a "person" based email system : share the information contained in email among the different members of a team - design the company document flow.
 - A cost effective solution, CHEAPER, EASIER TO MAINTAIN,.. than "market leader"
 - Designed for SME with few system expert - but it is also an "Administrators' friendly solution " when used in a large organisation (nothing on client, 10 minutes to install)
 - Virus : if set, the policy will accept only signed and structured documents - no real need to use a virus protection software
 - XML/SOAP: the envelope contains more information and therefore, guarantees a better document flow management
 - Archive: as EdiPaxEDE requires no "administrator right" to run, you can keep the same product through the document chain, up to archives on CD

EdiPaxEDE-v3 - Installation

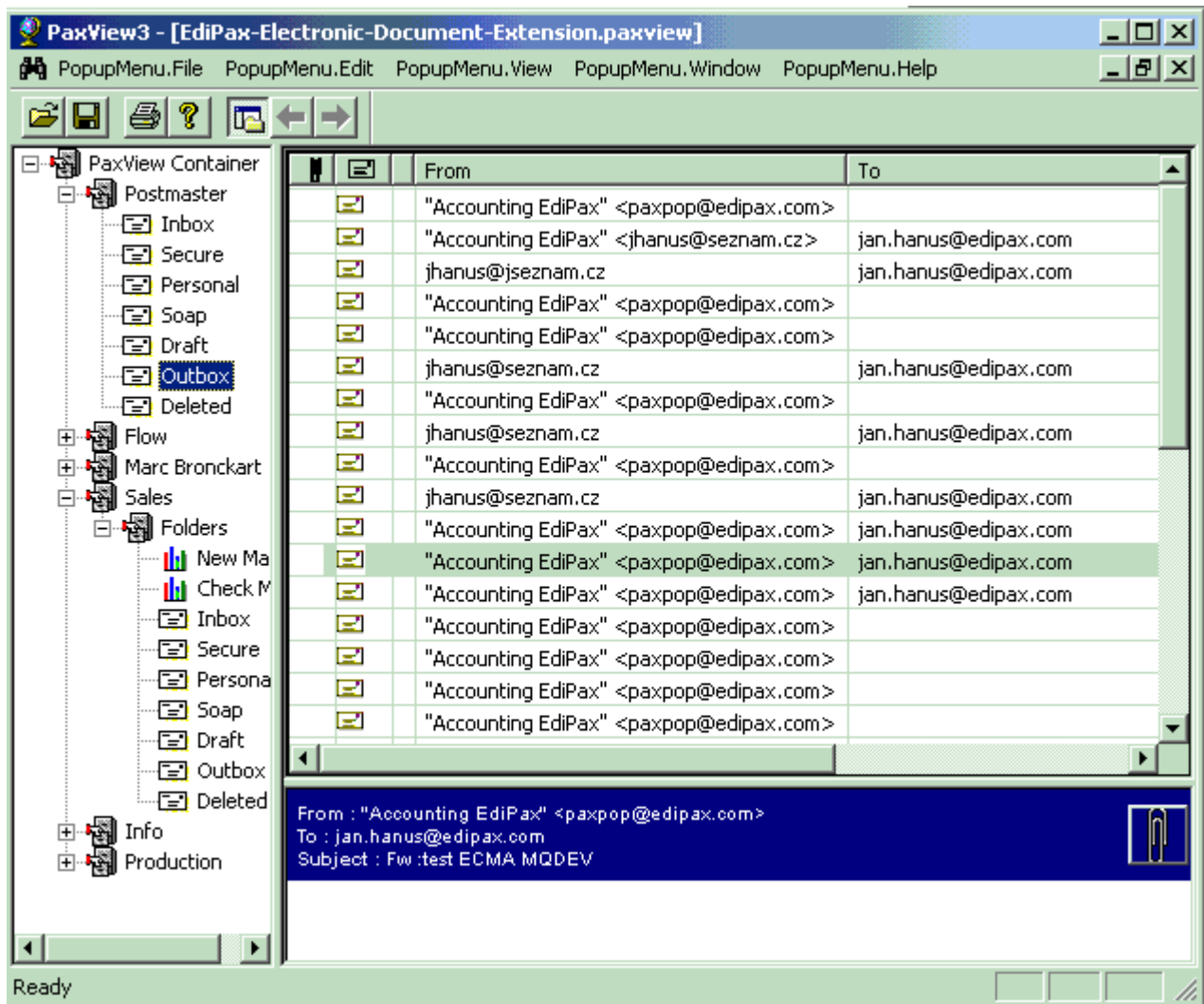
EdiPaxEDE is a Windows 32 application. Easy, quick to install, no COM object to register. A standard disk share is enough to share the program and the data. Just double click the "exe". To restrict some access, just define access to shares and files accordingly. Program will also run from a CD. We supply MSI for first installation. For additional users ... create a shortcut





EdiPaxEDE-v3 - Structure

Each user get access to 1 or several functional mailboxes (shared by several users) and 1 private mailbox. Some of those boxes can be shared with Outlook / Outlook Express



EdiPaxEDE-v3 - New message

Create or post messages, conform to company document flow procedures.

