



EdiPax and the Pax Software Family; E-mail: info@edipax.com - <http://www.edipax.com>

EdiPax-For-Brico - Management summary

EdiPax-for-Brico is an application designed to suit Brico (<http://www.brico.be>) business partners e-Commerce needs, including connectivity.

Data - Final form

You can preview or print the document - final form

EdiPax v3 - Edifact Document Viewer

BRICO orders

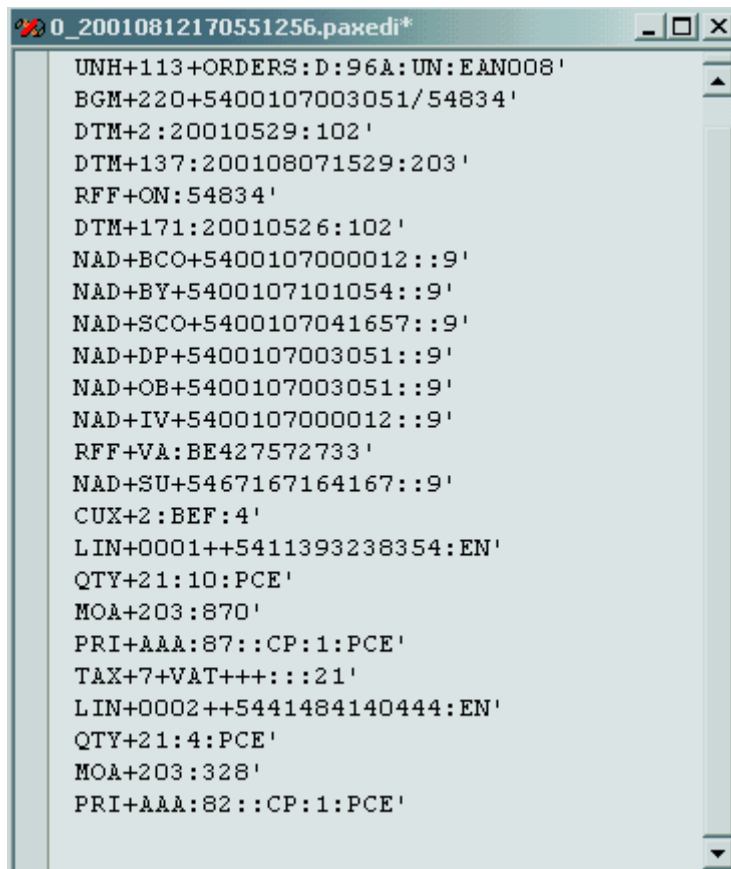
Message date: 07/08/2001 15:30
 Date and No: 07/08/2001 15:30; 5400107003051/54839
 Order date: 20010604

Supplier		Supplier Corporate Office	
Cy Name	Obi - DC - Haro	Cy Name	Obi - DC - Haro
Buyer		Buyer Corporate Office	
Cy Name	Obi - DC - Haro	Cy Name	Obi - DC - Haro
Invoiced to		Delivered to	
Cy Name	Obi - DC - Haro	Cy Name	Obi - DC - Haro
Order nbr	54839 from 20010526		
REQ.Deliv. date	20010604		
Delivery Conditions. date	20010604		

PRODUCT Line	PRODUCT EAN CODE	Quantity	Unit	Item line value	Price	Price type	Price basis
0001	5410491999991	1	PCE			CP	1
0002	5410491994767	1	PCE			CP	1
0003	5721143083556	2	PCE			CP	1

Data - Original form

The data your collect are shown in compressed EDIFACT form

A screenshot of a text editor window titled "0_20010812170551256.paxedi*". The window contains a list of EDIFACT segments in compressed form. The segments are: UNH+113+ORDERS:D:96A:UN:EAN008', BGM+220+5400107003051/54834', DTM+2:20010529:102', DTM+137:200108071529:203', RFF+ON:54834', DTM+171:20010526:102', NAD+BCO+5400107000012::9', NAD+BY+5400107101054::9', NAD+SCO+5400107041657::9', NAD+DP+5400107003051::9', NAD+OB+5400107003051::9', NAD+IV+5400107000012::9', RFF+VA:BE427572733', NAD+SU+5467167164167::9', CUX+2:BEF:4', LIN+0001++5411393238354:EN', QTY+21:10:PCE', MOA+203:870', PRI+AAA:87::CP:1:PCE', TAX+7+VAT+++:::21', LIN+0002++5441484140444:EN', QTY+21:4:PCE', MOA+203:328', and PRI+AAA:82::CP:1:PCE'. The text is displayed in a monospaced font within a light-colored window with a scroll bar on the right side.

```
UNH+113+ORDERS:D:96A:UN:EAN008'  
BGM+220+5400107003051/54834'  
DTM+2:20010529:102'  
DTM+137:200108071529:203'  
RFF+ON:54834'  
DTM+171:20010526:102'  
NAD+BCO+5400107000012::9'  
NAD+BY+5400107101054::9'  
NAD+SCO+5400107041657::9'  
NAD+DP+5400107003051::9'  
NAD+OB+5400107003051::9'  
NAD+IV+5400107000012::9'  
RFF+VA:BE427572733'  
NAD+SU+5467167164167::9'  
CUX+2:BEF:4'  
LIN+0001++5411393238354:EN'  
QTY+21:10:PCE'  
MOA+203:870'  
PRI+AAA:87::CP:1:PCE'  
TAX+7+VAT+++:::21'  
LIN+0002++5441484140444:EN'  
QTY+21:4:PCE'  
MOA+203:328'  
PRI+AAA:82::CP:1:PCE'
```

Data - In-house Format

We propose several formats in package. With the help of the Pax-Mapper, you can also gen own !

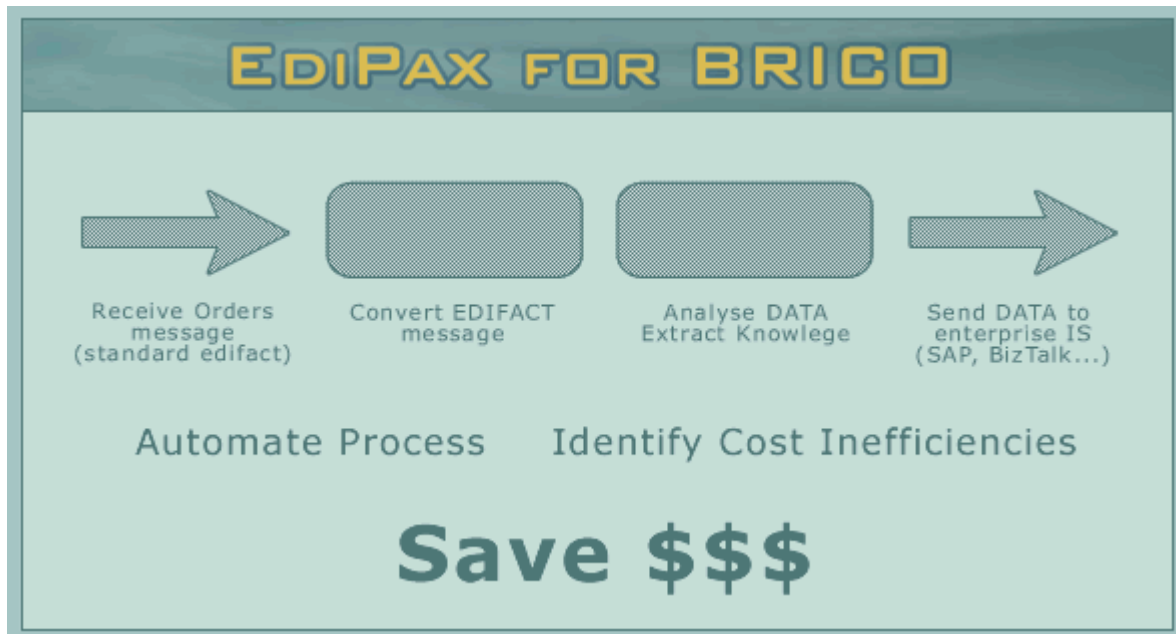
Donwload txt in-house file

```

edipax-for-brico-in-house.txt
HDR 548348315810254001070005006      00208501
LIN5483483143696 00085000000000039185000000004612100 000001
LIN5483483135615 000680000000000409360000000006022100 000002
LIN5483483140404 000390000000000599430000000015372100 000003
LIN5483483113057 000390000000000286260000000007342100 000004
LIN5483483142156 00020000000000011000000000000552100 000005
LIN5483483144655 000800000000000136800000000001712100 000006
LIN5483483139330 00020000000000013400000000000672100 000007
LIN5483483108848 00075000000000069000000000000922100 000008
LIN5483483123742 000800000000000081600000000001022100 000009
LIN5483483132072 001500000000000153000000000001022100 000010
LIN5483483101825 00040000000000077200000000001932100 000011
LIN5483483102310 00008000000000018800000000002352100 000012
LIN5483483124473 00010000000000020300000000002032100 000013
LIN5483483132645 000120000000000032760000000002732100 000014
LIN5483483107995 000120000000000032760000000002732100 000015
LIN5483483105250 00005000000000010300000000002062100 000016
LIN5483483106745 0000500000000000930000000001862100 000017
LIN5483483165209 0001000000000001960000000001962100 000018
LIN5483483165216 00005000000000022950000000004592100 000019
LIN5483483156252 00005000000000046500000000009302100 000020
LIN5483483165179 00003000000000027150000000009052100 000021
LIN5483483111893 0000200000000001240000000006202100 000022
    
```

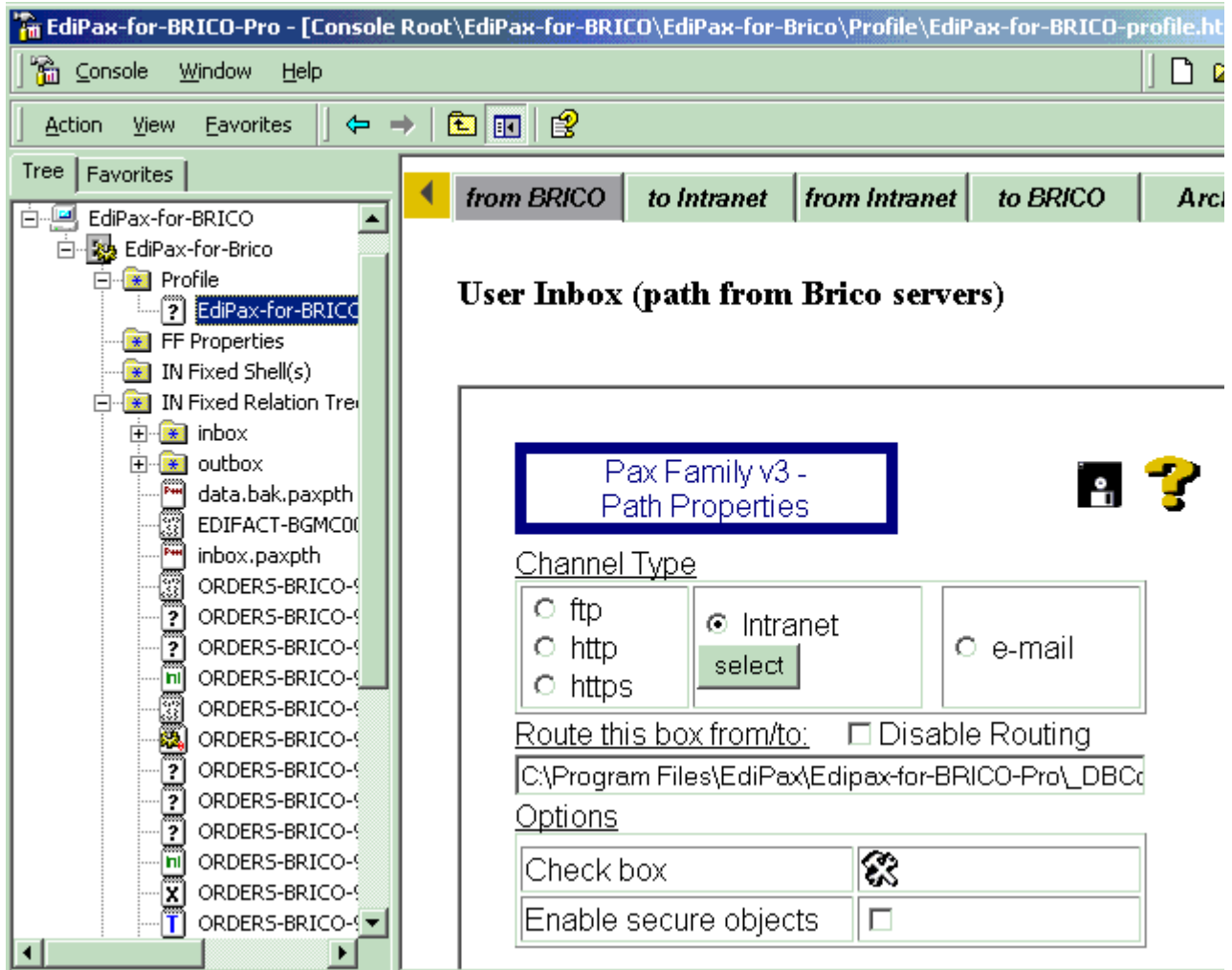
Flow Scheme

The complete process : collect the data, review the data, convert the data to in-house format and import in accounting application



System - Microsoft MMC Snap-in

State of the art management tools (MMC) yo improve productivity



© Copyright EdiPax, 1999-2003; E-mail: info@edipax.com - <http://www.edipax.com>