



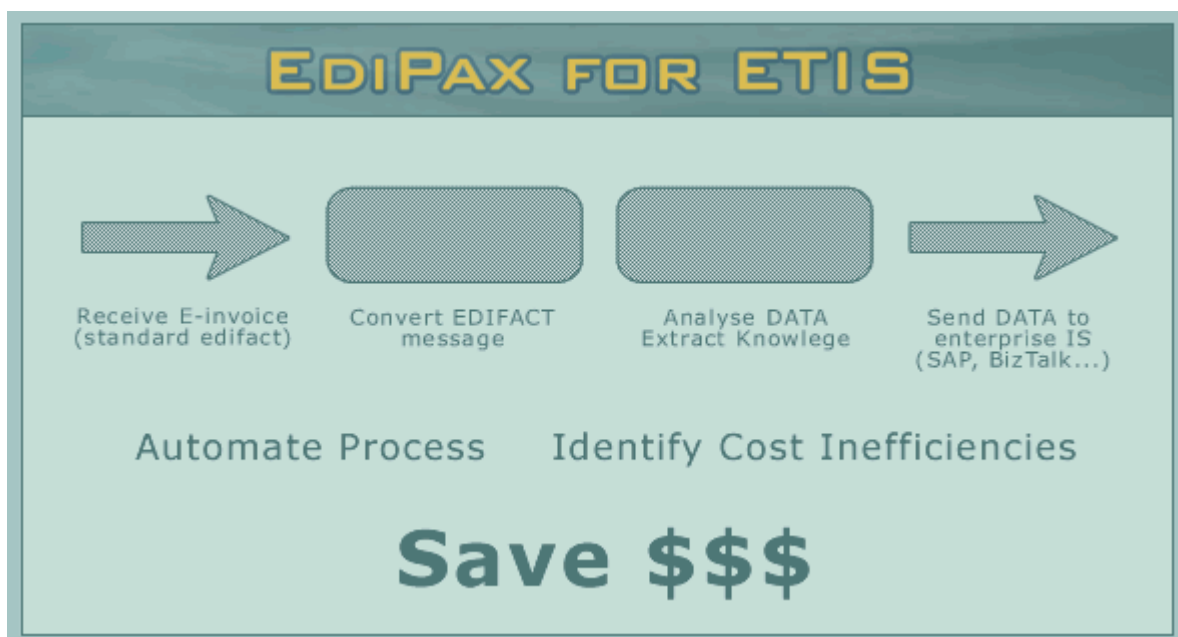
EdiPax and the Pax Software Family; E-mail: info@edipax.com - <http://www.edipax.com>

EdiPax-For-ETIS - Management summary

EdiPax-for-ETIS is an application designed to act as ETIS (<http://www.etis.org>) data exchange protocol client. It is especially customised for Belgacom Elise.

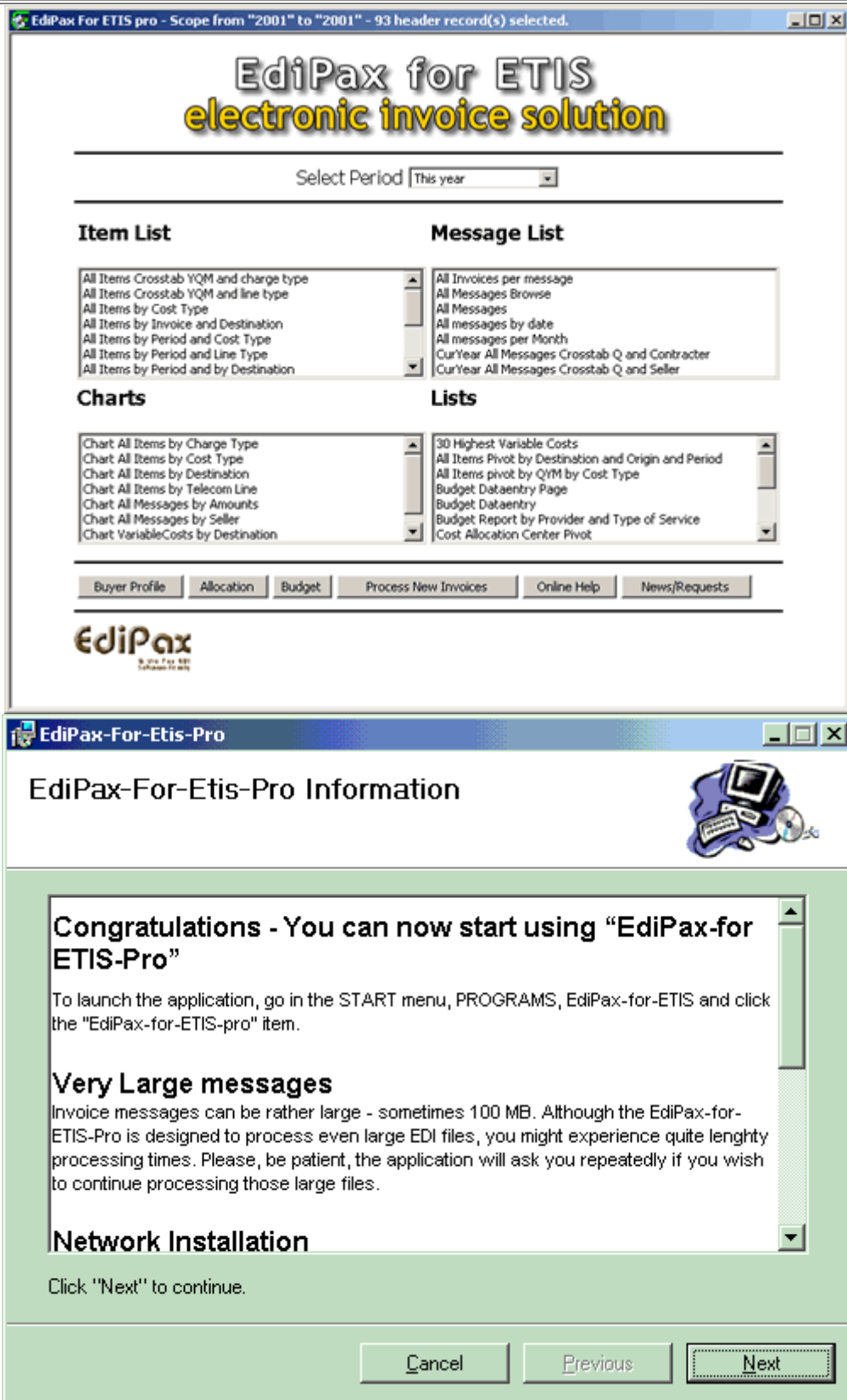
EdiPax-For-ETIS - Flow Scheme

The complete process : collect the data, review the data, convert the data to in-house format and import in accounting application



EdiPax-For-ETIS - User Interface

We provide easy to install MSI packages. We present user friendly interface



EdiPax-For-ETIS - Data, Original form

The data you collect are shown in compressed EDIFACT form

The screenshot shows a Notepad window with the following text:

```


D:\_prod\admin.edipax.com\_DBConnectIN\Bridge\database\INVOIC-ETIS-sample.edi.txt
File Edit View Favorites Tools Help
D:\_prod\admin.edipax.com\_DBConnectIN\Bridge\database\INVOIC-ETIS-sample.edi.txt
UNB+UNOA:4+BELGACOM/BEBF-ELISE+00201200001BELGACONTEST+
20010118:1718+I0496/0005+++A+1'
UNH+0496/0005/0001+INVOIC:D:99B:UN+++ETEB02:3:800+ELISE:4:0'
BGM+380+5010001836+9+AB'
DTM+3:20000207:102'
PAI:::31'
FTX+ACB+++ENG'
RFF+PQ:??+?+501/0001/83645??+?+'
RFF+ADE:1'
NAD+SE+BEL01:003:193++RES PO NAMUR+R HENRIETTE:60+NAMUR++B-5000+BEL'
FII+SE+200-3006015-97++BEL'
RFF+AHO:RCB 587.163'
RFF+VA:BE 202.239.951'
NAD+BY+201200001++BGC TEST+BACK STREET:17A+XMV TOWN++B-7913+BEL'
RFF+VA:BE 202.300.900'
NAD+IV+++BGC TEST+PA-STREET:17A+XMV TOWN++B-7913+BEL'
NAD+PK+++COR/CSE'
CTA+IC'
COM+080055900:TE'
CUX+1:BEF'
PAT+1++72:1'
DTM+13:20000221:102'

LIN+A+++0'
IMD+C++04:004:193:200600500'
QTY+107:1:NMB'
DTM+194:20000102:102'
DTM+206:20000102:102'
MOA+38:-100'
TAX+1+VAT++++:21.00'
ALC+H++2+1+:::200600500'
Done My Computer
    
```

EdiPax-For-ETIS - Data, Final form

You can preview or print the document - final form

EdiPax v3 - Edifact Document Viewer
EdiPax



Date and No.: 10/10/2001, 5129445033

<p style="text-align: center;">Buyer</p> <p>009580061 BRICO BELGIUM VAT: BE427572733</p>	<p style="text-align: center;">Invoiced to</p> <p>BRICO BELGIUM</p>
<p style="text-align: center;">Service provided by</p> <p>QUACKELBEEN PIA</p> <p>Contact: Tel Contact:</p>	<p style="text-align: center;">Sold by</p> <p>BEL01 CDS PCO BRUSSEL</p>

Payment reference	+++513/9445/03361+++
Bank Account	125
Payment Date	09/11/2001

Item	Start	End	Detail	From To	Amount	Tax	Qty	Unit	Desc	Cont
1			3293550834							
2	01/10/2001	31/10/2001	Z00000774		13.3863	21.00	1	NMB		
3	01/10/2001	31/10/2001	Z00000676		2.1567	21.00	1	NMB		
4	01/10/2001	31/10/2001	Z00000966		1.4874	21.00	1	NMB		
5	01/09/2001	27/09/2001	Z00012539	BEL BEL	2.5236	21.00	50	CO		
6	27/09/2001	30/09/2001	Z00012539	BEL BEL	0.297	21.00	6	CO		

Total	Amount	Currency
Amount invoiced	24.02	(EUR)
Additional Amount	-24.02	(EUR)
Additional due	0.00	(EUR)

VAT Basis	Rate	Tax Charge	Currency
19.8510	21.00	4.17	(EUR)

EdiPax-For-ETIS - Data, In-house Format

We propose several formats in package. With the help of the Pax-Mapper, you can also generate your own !

[Download txt in-house file](#)

```

edipax-for-etis-xml-in-house-sap.txt
"HEADER", "308877", "BELGACOM/BEBF-ELISE", "BELGAUSER0001", "", "0357/0093/0001",
"DETAIL", "308877", "308878", "32987654321", "Sales", "", "", "", "RNIS-2 TWIN", "322
"FOOTER", "308877", "308879", "VAT", "21.00", "87,1225", "18,3000", "105,4225", "87,
"HEADER", "308880", "BELGACOM/BEBF-ELISE", "BELGAUSER0001", "", "0357/0093/0002",
"DETAIL", "308880", "308881", "32123456789", "Sales", "", "", "", "LIGNE TELEPHONIQUE
"FOOTER", "308880", "308882", "VAT", "21.00", "88,5640", "18,6000", "107,1640", "88,
"HEADER", "309201", "BELGACOM/BEBF-ELISE", "BELGAUSER0001", "", "0357/0093/0004",
"DETAIL", "309201", "309202", "32112233445", "Sales", "", "", "", "LIGNE TELEPHONIQUE
"FOOTER", "309201", "309203", "VAT", "21.00", "20,5185", "4,3100", "24,8285", "20,52

```

[Download xml file](#)

```

<DELIVERY_DATE>27/07/2002</DELIVERY_DATE>
<TOTAL_LINE>0,0672</TOTAL_LINE>
<VAT_RATE>21,00</VAT_RATE>
</LINE>
- <LINE NO="288" TYPE="GOODS">

    <DELIVERY_DATE>27/07/2002</DELIVERY_DATE>
    <TOTAL_LINE>0,3613</TOTAL_LINE>
    <VAT_RATE>21,00</VAT_RATE>
</LINE>
</LINES>
- <SUMMARY>
    <INVOICE_AMOUNT>201,82</INVOICE_AMOUNT>
    <VAT_AMOUNT>0,00</VAT_AMOUNT>
    <EXCL_AMOUNT>201,82</EXCL_AMOUNT>
- <SPLIT_VAT>
    - <VAT VAT_RATE="21">
        <TOTAL_LINE>166,7945</TOTAL_LINE>
        <VAT_AMOUNT>35,03</VAT_AMOUNT>

        <EXCL_AMOUNT>166,7945</EXCL_AMOUNT>
    </VAT>
    - <VAT VAT_RATE="12">
        <TOTAL_LINE>1,1</TOTAL_LINE>
        <VAT_AMOUNT>2,2</VAT_AMOUNT>
        <EXCL_AMOUNT>1,1</EXCL_AMOUNT>
    </VAT>
</SPLIT_VAT>
</SUMMARY>
</DOCUMENT>
</BOB_XML_DOCUMENT>

```

EdiPax-For-ETIS - Data, Reports

After transformation, your data are loaded and available in MS Office product family

_DAP_lineItems - Microsoft Internet Explorer

Address: D:_prod\admin.edipax.com_\DBConnect\N\Bridge\database_DAP_lineItems.htm

UNH01	LIN01	netAmount	from	to	units	unitType
0496/0005/000	A	-100	BE	LU	1	107
0496/0005/000	2	540			1	107
0496/0005/000	2	100			1	107
0496/0005/000	3	-120			1	107

q_lineItems 1-4 of 4

All Items by Type of Charge - Microsoft Internet Explorer

All Invoiced Items by Type of Charge

type **Grand Total of Net Amounts:** 411.116,29
 type **Grand Total of Net Amounts:** 2.392.641,53
 type **Grand Total of Net Amounts:** 321.677,91

UNH01:	ac_a7:	Net Amount:	From:	To:	Start Date:	End Date:
0072/0275/02	200000774	540,00			20010401	20010430
0072/0275/02	200003417	78,50			20010401	20010430
0072/0275/02	200000500	60,00			20010401	20010430
0072/0275/02	200000536	360,00			20010401	20010430
0072/0275/02	200000522	337,50			20010401	20010430
0072/0275/02	200000537	90,00			20010401	20010430
0072/0275/02	200012261	-56,55			20010301	20010330
0072/0275/02	200057035	-0,43			20010309	20010309
0072/0275/02	200012260	-3,78			20010301	20010331
0072/0275/02	200011985	-1,47			20010315	20010327

q_lineItems_cost_type 1-10 of 1743

type **Grand Total of Net Amounts:** 21.635,37

q_lineItems_cost_type-type 1-4 of 4

All Items Crosstab YQM and line type - Microsoft Internet Explorer

Cost Allocation by Telecom Line

Year	Quarter	Month	Total Amount	ISD	PTP	TEL	TLX
2001	1	200102	10,91	10,91			
2001	2	200101	-56,55			-56,55	
2001	2	200102	-0,43			-0,43	
2001	2	200103	910807,78	215169,38	556133,34	123875,69	15629,37
2001	2	200104	2235315,44	195936	1836508,19	196865,25	6006
2001	2	200105	-1,47			-1,47	
2001	2	200106	-1,88			-1,88	
2001	2	200108	-0,43			-0,43	
2001	2	200109	-0,68			-0,68	

EdiPax-For-ETIS - Data, Charts & Pivot tables

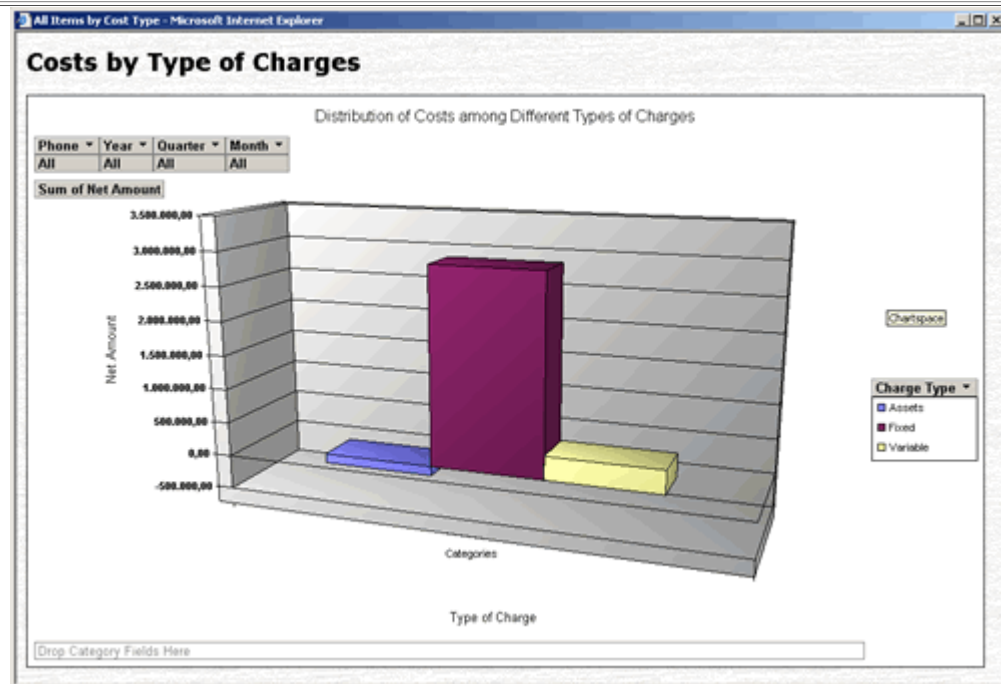
Use sophisticate MS data analysis tools to extract valuable information from the database

All Items Crosstab YQM and line type - Microsoft Internet Explorer

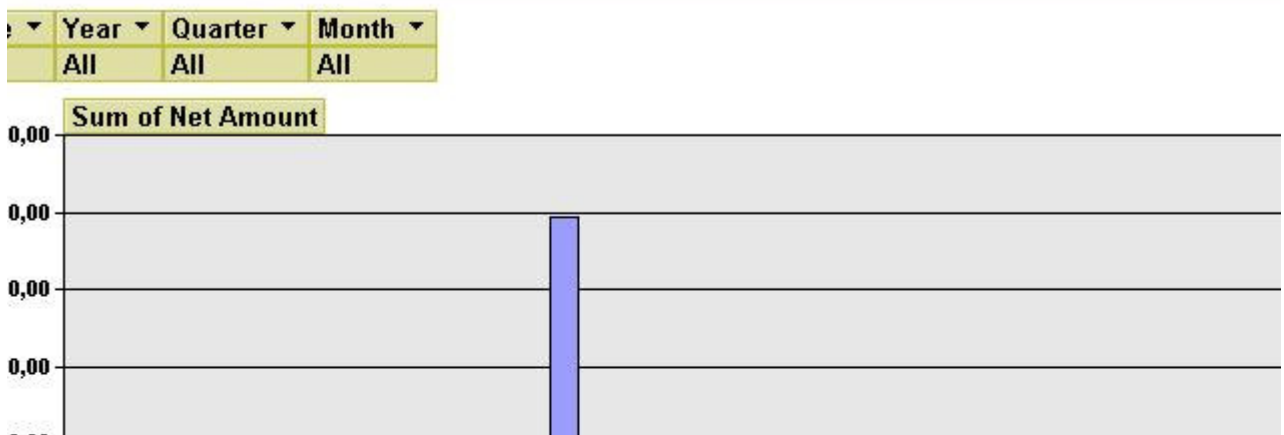
Cost Allocation by Telecom Line

Year	Quarter	Month	Total Amount	ISD	PTP	TEL	TLX
2001	1	200102	10,91	10,91			
2001	2	200101	-56,55			-56,55	
2001	2	200102	-0,43			-0,43	
2001	2	200103	910807,78	215169,38	556133,34	123875,69	15629,37
2001	2	200104	2235315,44	195936	1836508,19	196865,25	6006
2001	2	200105	-1,47			-1,47	
2001	2	200106	-1,88			-1,88	
2001	2	200108	-0,43			-0,43	
2001	2	200109	-0,68			-0,68	
2001	2	200110	377,03			377,03	

14 All Items Crosstab YQM and line type 1-10 of 13

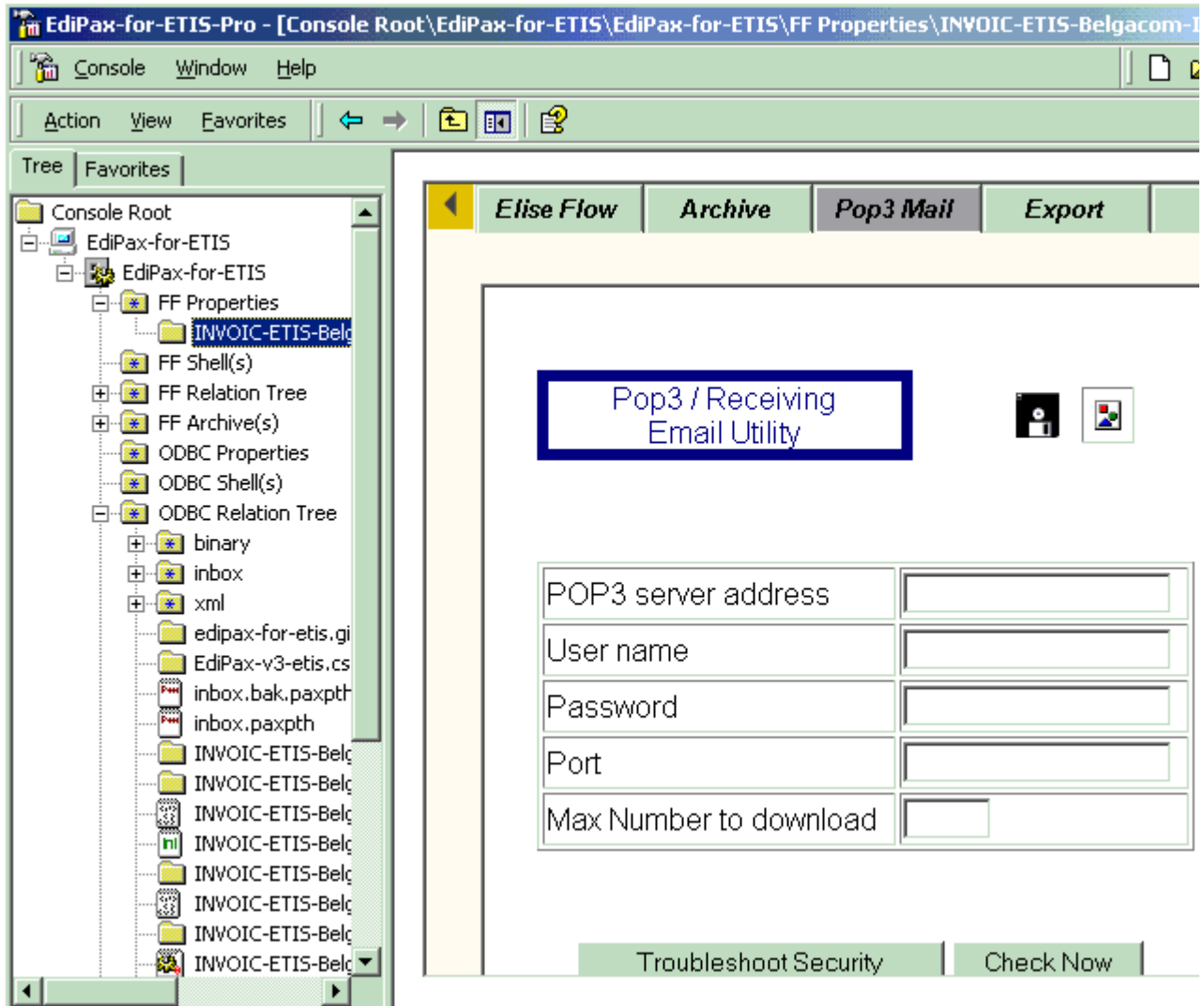


VAT = - Period : 2000-2005 - Microsoft Internet Explorer



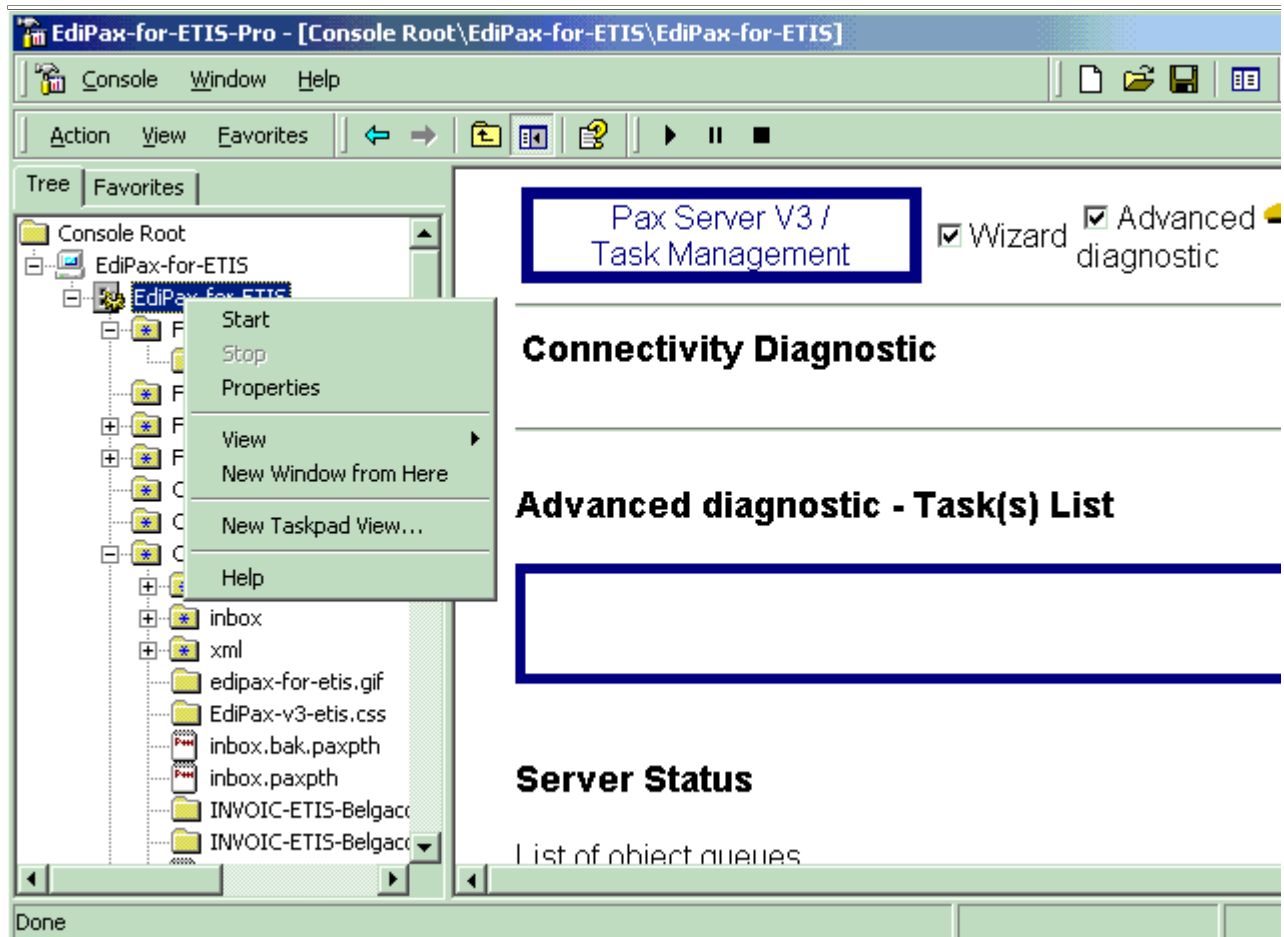
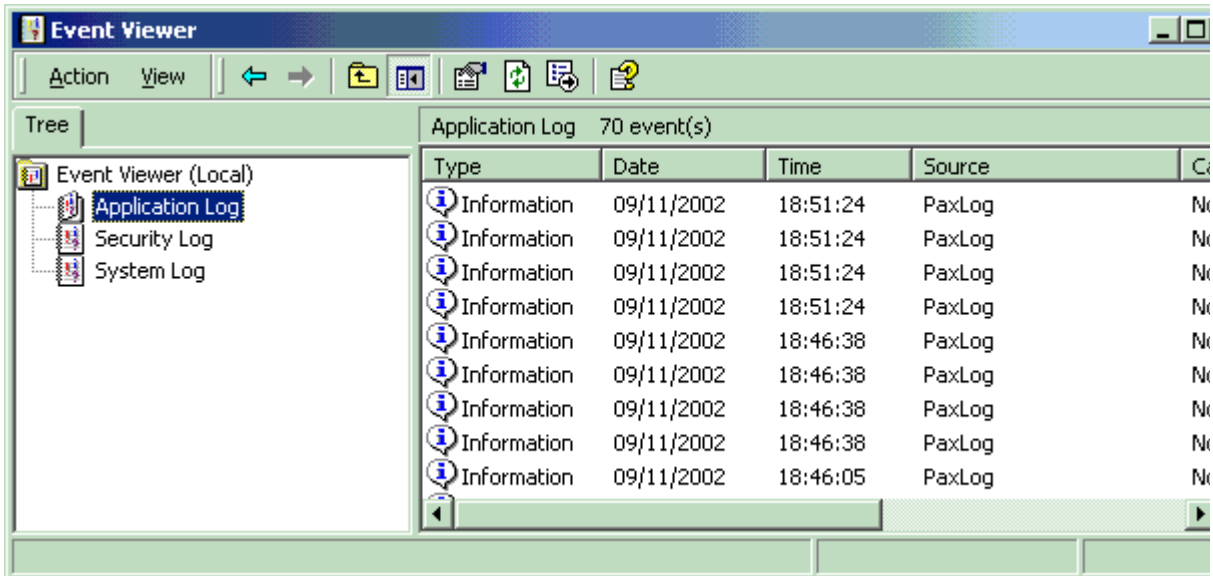
EdiPax-For-ETIS - System, Microsoft MMC Snap-in

State of the art management tools (MMC) - improve productivity



EdiPax-For-ETIS - System, Diagnostics, Logs and Alerts

Installation and communication diagnostic, extended process logs stored on disk or in event v



© Copyright EdiPax, 1999-2003; E-mail: info@edipax.com - <http://www.edipax.com>