



EdiPax and the Pax Software Family; E-mail: info@edipax.com - <http://www.edipax.com>

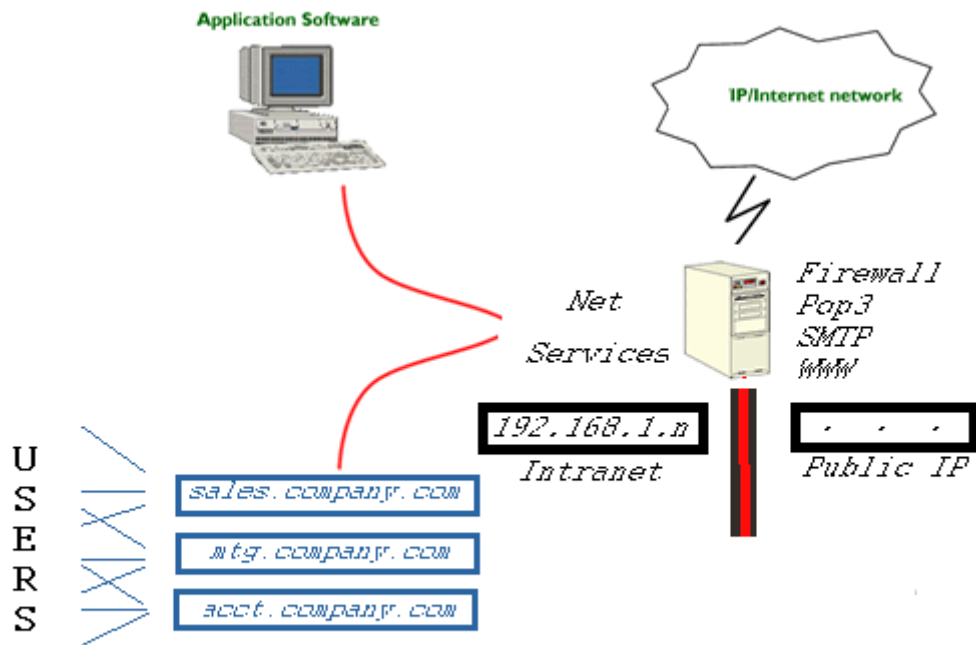
PaxEMS-v3 - Features

The Pax Extended Mail Server (PaxEMS-v3) is a POP3 and SMTP server, but it is not designed to be a WWW email server, even if it does have those capabilities built-in . We rather like to say that "PaxEMS-v3" is an email enabling application designed for professional usage. It is an efficient and powerful application designed "by professionals" and "for professionals" - no fuss, no fun, just a good solid, efficient Windows 32 look. let us start to use Internet email(s) as "productivity tools" !

- Huge cost savings in time and money - 220 EURO server licence - no client licence - low requirements
- Installation : 1 minute ! For sure you must see it to believe it... so why not download and try
- A "all minimal functions" Pop3 and SMTP server ... BUT with Domain management and full feature "store and forward" capabilities
- Functional mailbox design opposed to single user design : a requirement in regards of new "EC private usage of email regulations"
- Our server will work on Win98, NT, Millenium, NT2000/XP ... no need for big machine(s) - any Pentium processor will suit !
- No need to install virus protection - you may but not required - "EdiPaxEDE-v3" client and server will not load any armful program - basic functionality only ! Stop to run after latest virus - more than 62000 (yes sixty two thousands !) listed today - When is next ?
- Design for "functional usage in a company", no "chat", no "news",... !
- Not really adapted to put on WWW and serve a large user community, but it will suit any small to medium user community who want to share email services, in intranet + internet email IN and OUT
- Interface with Outlook, Outlook Express, Netscape
- Save administrator time : our Windows32 application can operate from a server share - no installation required on each single client(s) - 1 share is enough
- Multidomain, multiuser Pop3 server
- Multilingual context sensitive help will pop up on "mouse over" any dialog items

PaxEMS-v3 - Architecture

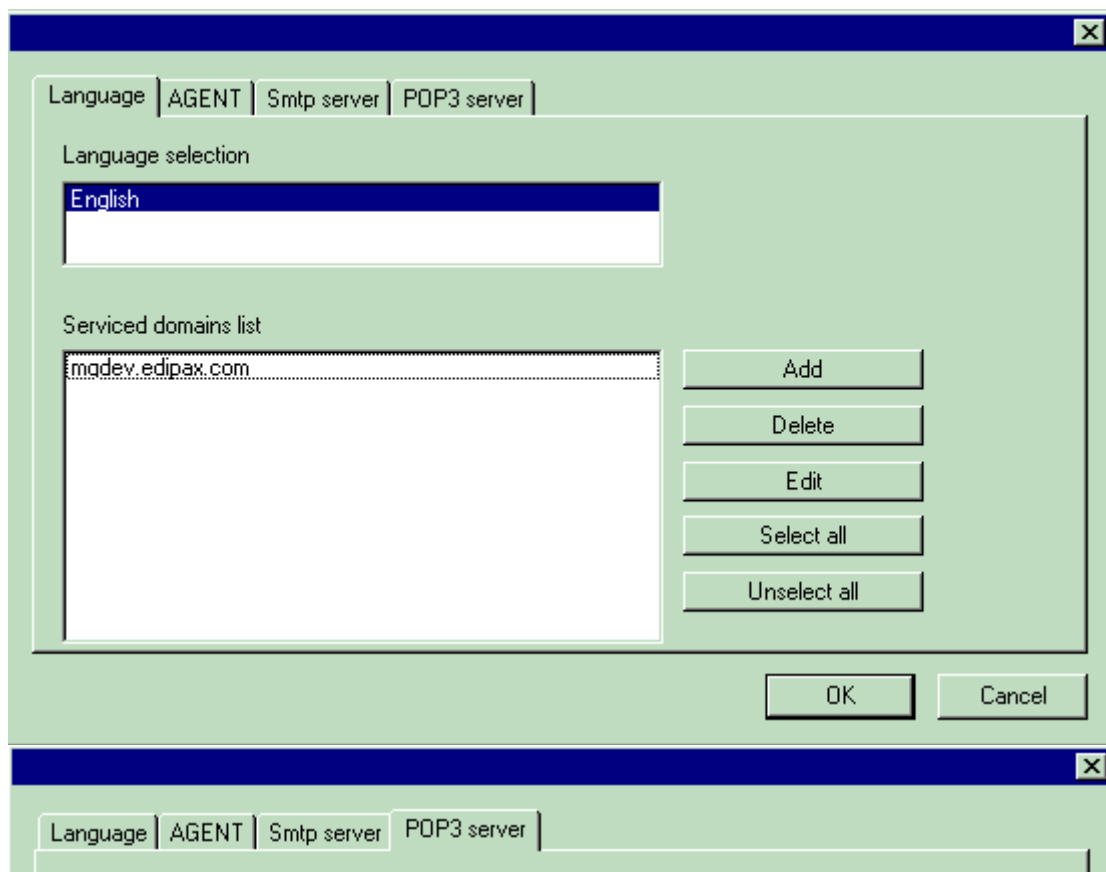
EdiPax can offer you a professional Email integrated solution with Firewall, shared folders,... Prices range from as low as 1250 EURO, server and all client licences included. Consult us !



PaxEMS-v3

PaxEMS - Configuration

"Right mouse" the icon or double click "PaxEMS-v3.exe" to start the "configuration" dialog. The server will get the IP configuration from your machine on first load. Just correct manually if needed. Input a user, create a domain (!!! for domain you must input the same value for [Item text] and [Item value])... and there we go ... server is installed. Configure your SMTP/Pop3 client (Outlook, Eudora, Netscape,..) to use your server.



PaxEMS - Configuration Advanced

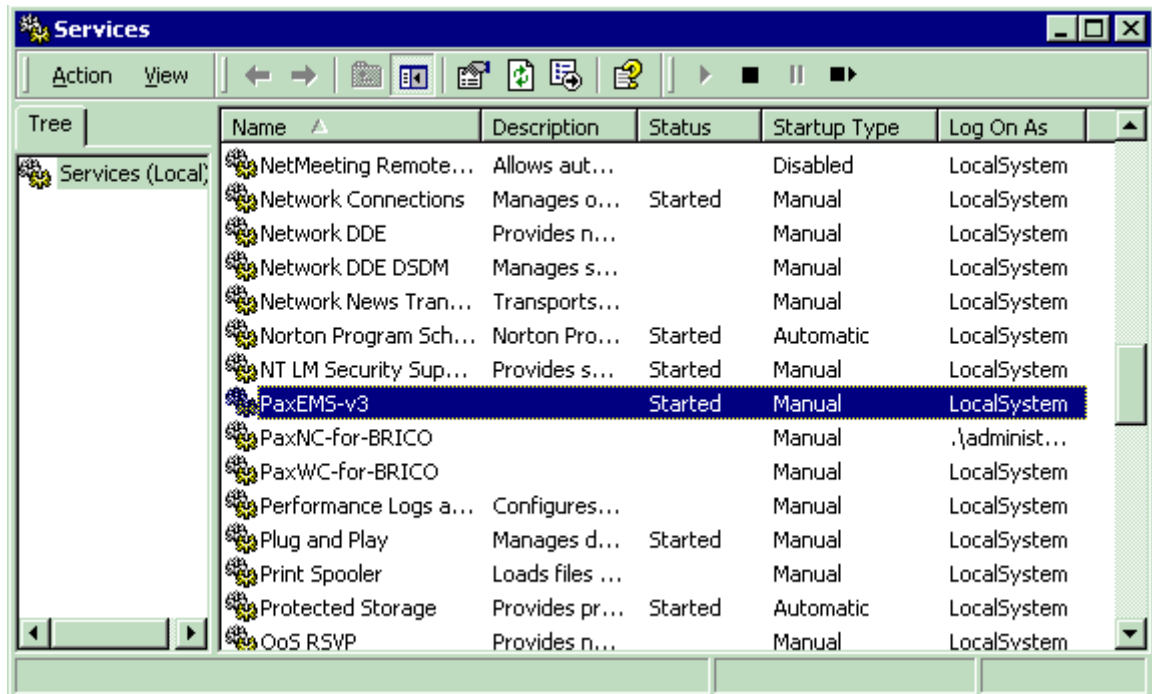
- Multilingual support : specify your language and restart the application if instructed to do so
- Outlook Express and Outlook connectivity : define the folder to "spy". PaxEMS will read incoming messages from this folder and forward them to the rest of the community
- AGENT : some systems parameters to tune according to your local telecom configuration
- SMTP : specify service port and relay option
- POP3 : specify service port, user names and password

The screenshot shows a dialog box titled "PaxEMS - Configuration Advanced" with a blue title bar and a close button (X) in the top right corner. The dialog has four tabs: "Language", "AGENT", "Smtp server", and "POP3 server". The "AGENT" tab is selected. The main area contains five text input fields with labels to their left: "Primary DNS server" (value: 162.17.78.10), "Secondary DNS server" (value: 99.202.55.10), "Number of retries" (value: 5), "Retries interval" (value: 20), and "Inbox folder name" (value: inbox). At the bottom right, there are two buttons: "OK" and "Cancel".

The screenshot shows the same dialog box, but with the "Smtp server" tab selected. The main area contains two text input fields with labels to their left: "Smtp server port" (value: 25) and "Relay allowed" (value: 1). At the bottom right, there are two buttons: "OK" and "Cancel".

PaxEMS - NT Service- Winxx

After installation on an NT machine, the server will appear in the service panel, But you can also run the program in station mode on an NT machine. You can also operate the server on a Win95, 98 or Millenium machine, saving hundreds of EURO in software license. Just double-click the "PaxEMS-v3.exe" file.



PaxEMS - Status, messages

Status, server activity and error messages, statistics are shown in the "Status" window. Click the icon or double click the PaxEMS-v3.exe to load

