



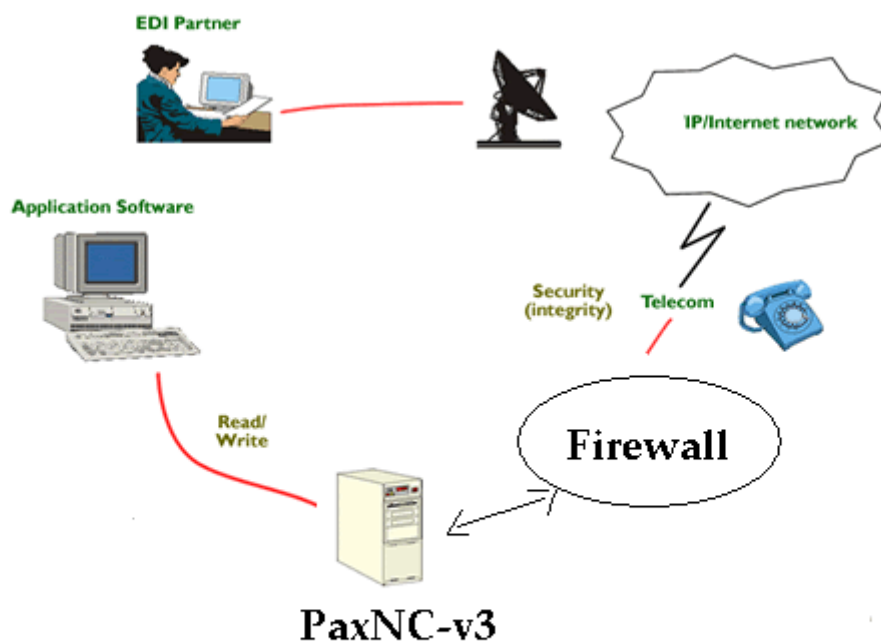
EdiPax and the Pax Software Family; E-mail: [info@edipax.com](mailto:info@edipax.com) - <http://www.edipax.com>

### PaxNC-TP - Management Summary

"Pax Net Connect Transfer Protocol" server is the server side implementation of HTTP/XML document (file) transfer protocol. Use any local browser and/or HTTP protocol client to Exchange files with our PaxNC-TP server.

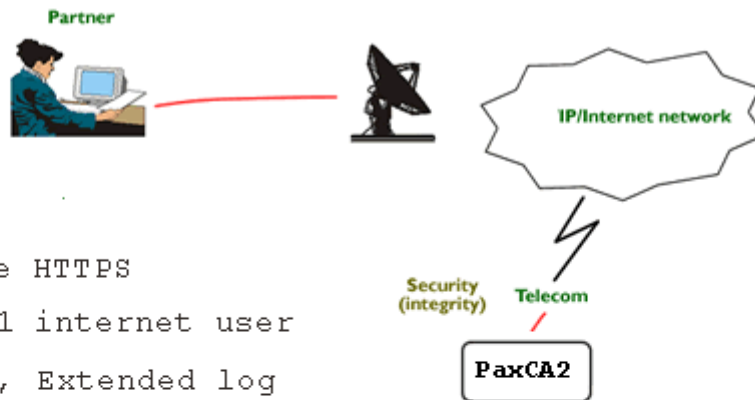
Features

- Clients get private folders on the WWW. They can list folder content, upload, download and delete files.
- Security : all IP/HTTP security tools can be used
- Data are "base64" format
- Similar protocol must be used on the client side(refer to EdiPaxNC client)



### PaxNC-TP - PaxCA2 integration

Secure login to access your HTTPS box. When many users, we recommend to use the PaxCA2 Secure Access utility (refer to Pax Server Family documentation)

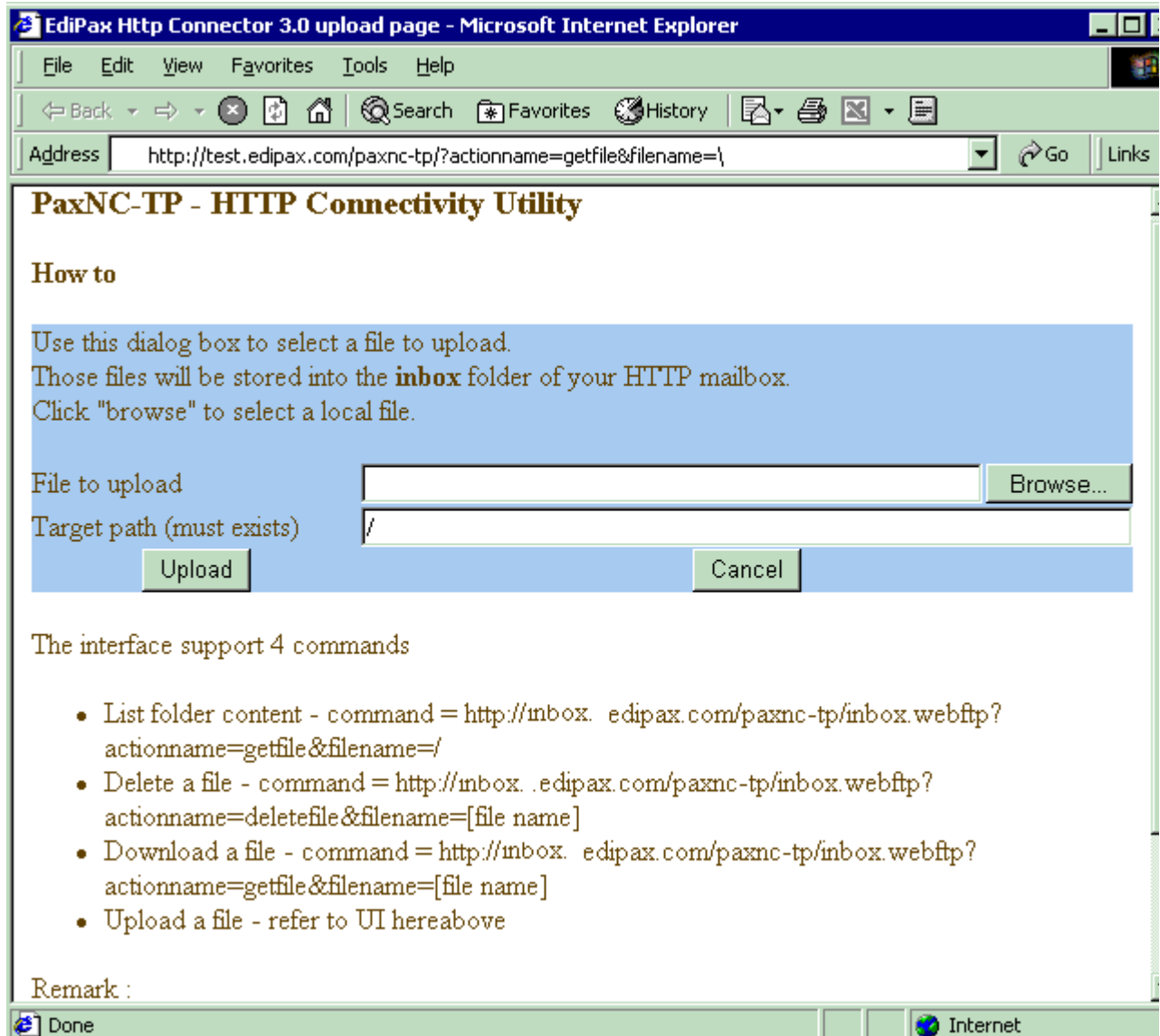


- Secure HTTPS
- Only 1 internet user
- Alert, Extended log
- Support for (very) large user community
- Maintenance and support costs reduced to a minimum - 1 user only => no need for sophisticated user management tools.
- *The technology behind ? A several months C++ development*

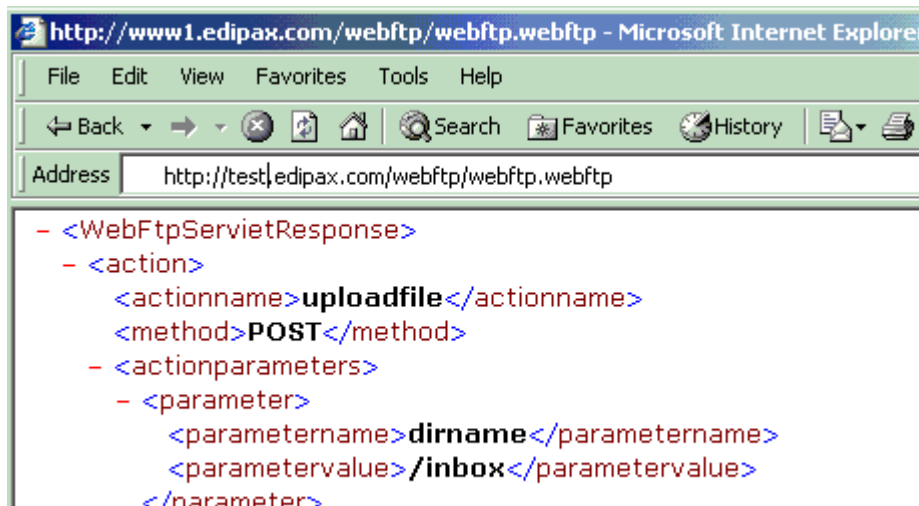
### PaxNC-TP - Data, Outbox, Upload a file

Upload a file into the HTTP folders. Files are BASE64 mime multipart (SMTP) and can encrypted.

Command= `https://[dns or IP]/paxNC-TP?actionname=getfile&filename=[path + file name]`



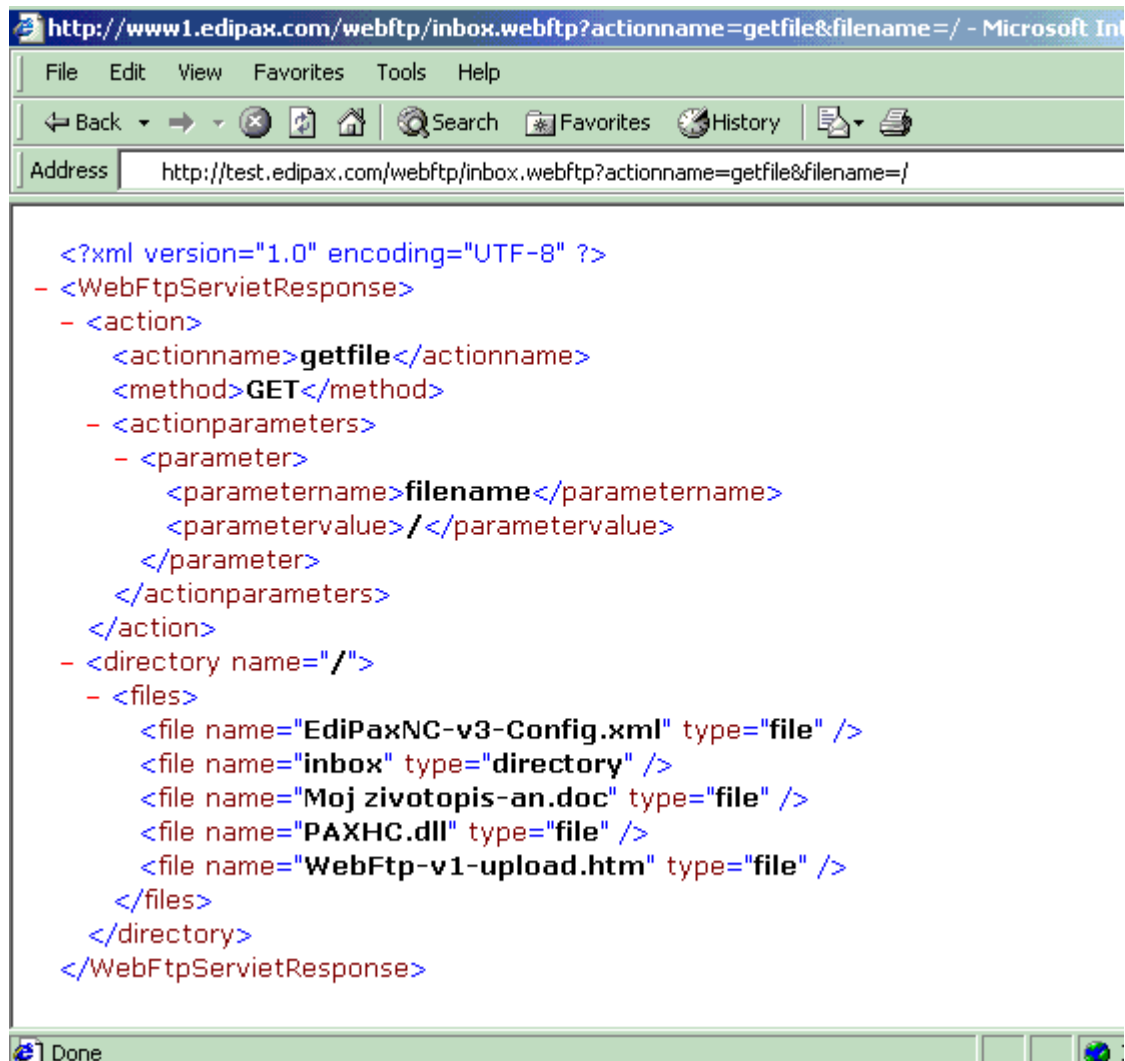
### Upload Confirmation Message



### PaxNC-TP - Data, Inbox, list of incoming messages

List the HTTP server directory content.

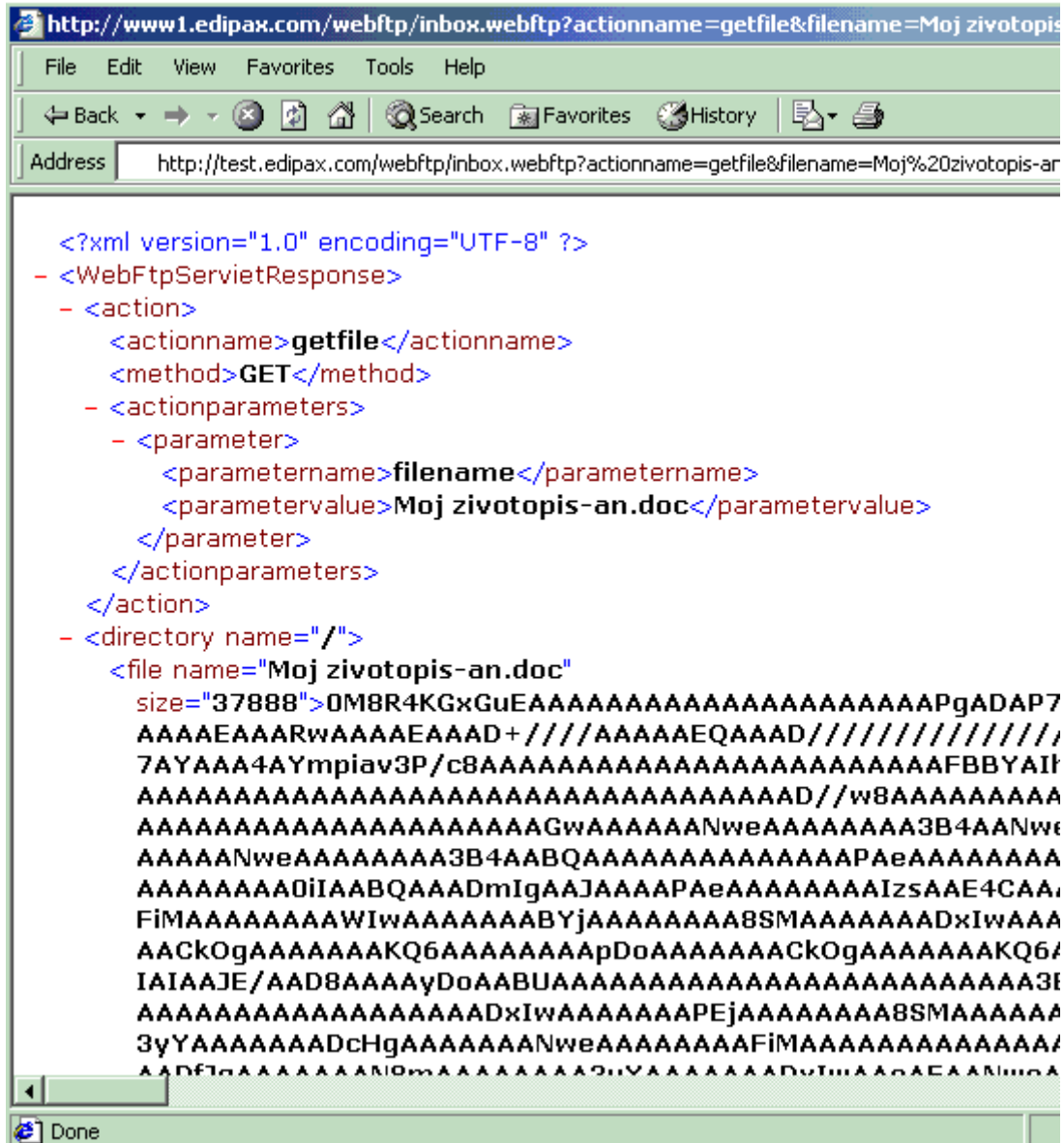
Command= `https://[dns or IP]/paxNC-TP?actionname=getfile&filename=[file name]`



### PaxNC-TP - Data, download a file

Get a file from the HTTP box. Files are BASE64 mime multipart (SMTP) and can be encrypted.

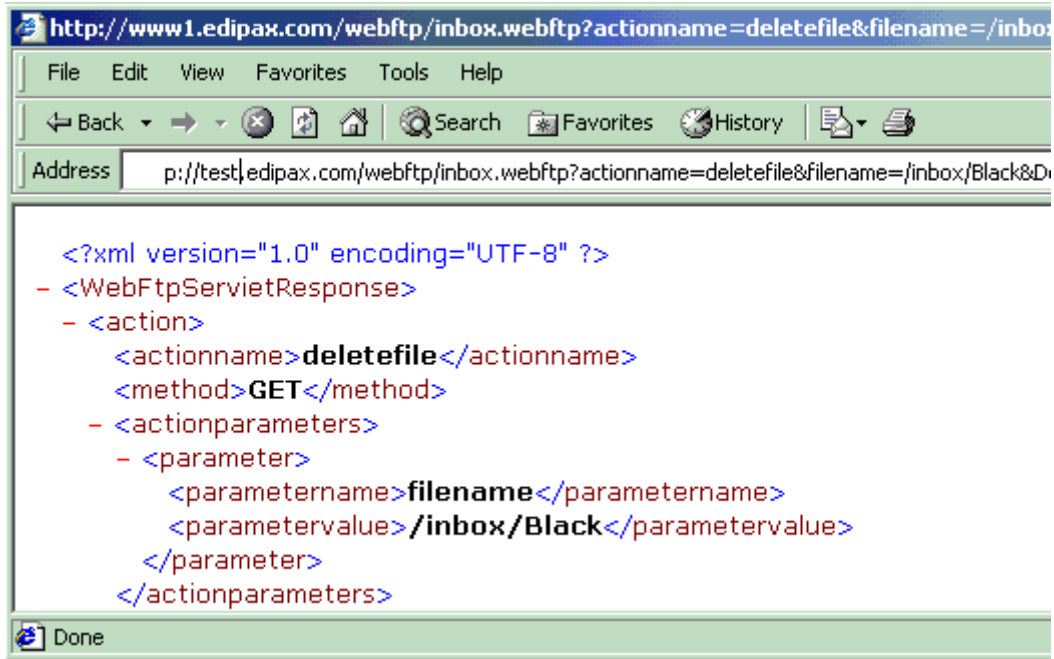
Command= https://[dns or IP]/paxNC-TP?actionname=getfile&filename=[path + file name]



### PaxNC-TP - Data, delete a file on server

Delete files from your HTTP box

Command= `https://[dns or IP]/paxNC-TP?actionname=deletefile&filename=[path + file name]`



### PaxNC-TP - Trace and logs

As all members of the Pax Server Family, PAXNC-TP will store messages in NT event viewer and in the Pax Family trace database. Administrator can access those via intranet or internet.

The screenshot shows a web browser window with the address bar containing 'https://ediserver0.belgium.be/log/'. Below the browser window is a table with three columns: Time, Action, and Status. The table contains one row with the following data:

Time	Action	Status
11/11/2002 8:25:16 PM	Server Queue Watch - ok 	success - no error

### PaxServer v3 - Queue event list per relation - latest items

FTP-IN

Date	actionParam	relationId	message	user	action
11/11/2002 6:20:12 PM	BE-MED002359	FTP-IN	object found	BE	inObject
11/11/2002 12:40:08 PM	BE-MED002358	FTP-IN	object found	BE	inObject
11/11/2002 8:10:07 AM	BD-MED002357	FTP-IN	object found	BD	inObject
11/11/2002 6:40:07 AM	BE-MED002356	FTP-IN	object found	BE	inObject
11/8/2002 6:20:10 PM	BE-MED002355	FTP-IN	object found	BE	inObject
11/8/2002 3:20:04 PM	BE-MED002354	FTP-IN	object found	BE	inObject
11/8/2002 12:40:08 PM	BE-MED002353	FTP-IN	object found	BE	inObject

Done

Date	actionParam	relationId	message	user
11/11/2002 12:46 AM	ORDERS-2200301001829-8711347900015-6492-2200301005437/33048-20021112:070107	MAPI-OUT	Message posted	Belgacc USER1
11/11/2002 12:46 AM	ORDERS-2200301001829-8711347900015-6492-2200301005437/33048-20021112:070107	MAPI-OUT	Message posted	Belgacc USER1
11/11/2002 12:45 AM	ORDERS-2200301001829-5443391098900-5882-2200301003037/69638-20021112:070106	MAPI-OUT	Message posted	Belgacc USER1
11/11/2002 12:45 AM	ORDERS-2200301001829-5440312289200-7172-2200301005635/46909-20021112:070105	MAPI-OUT	Message posted	Belgacc USER1
11/11/2002 12:45 AM	ORDERS-2200301001829-5443391098900-5882-2200301003037/69638-20021112:070106	MAPI-OUT	Message posted	Belgacc USER1
11/11/2002 12:45 AM	ORDERS-2200301001829-5440312289200-7172-2200301005635/46909-20021112:070105	MAPI-OUT	Message posted	Belgacc USER1
11/11/2002 12:45 AM	ORDERS-2200301001829-5413907000014-2821-2200301005635/46920-20021112:070101	MAPI-OUT	Message posted	Belgacc USER1

### PaxNC-TP - Paxdata, disk structure, document location

Documents/Messages are sorted and distributed among users/partners individual mailboxes. The structure is created and maintained by the PaxServer gateway or through any other process. Files can be stored encrypted or in clear.

