



EdiPax and the Pax Software Family; E-mail: [info@edipax.com](mailto:info@edipax.com) - <http://www.edipax.com>

### Net-EDI - Features

- Thin client - only requirement : "Microsoft Internet Explorer 5.0 or later"
- No installation. Connect from the very first minute
- Functional mailbox design opposed to single user design : a requirement in regards of new "EC private usage of email regulations"
- No need for big machine(s) - any pentium will suit - Will work on Win98, NT, Millenium, NT2000/XP ... !
- No need to install virus protection - security inside browser interface / HTTPS
- Design for "functional usage in a company"
- Low set-up cost, no license fee, no "per user" license
- Cost effective - save administrators' time
- Multidomain, multiuser HTTP mail server
- Multilingual context sensitive help will pop up on "mouse over" any dialog items

### How to - Register

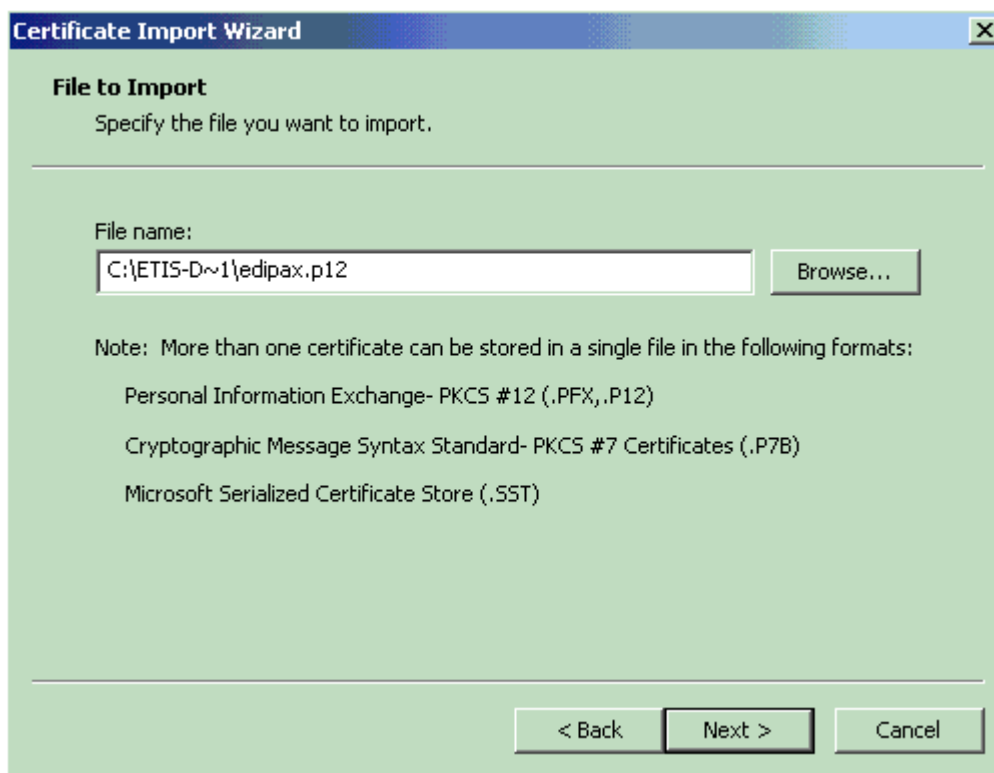
Despite the fact this service is most of the time not charged, you must register to get your EdiPax Certification Authority private key before you can use the service(s). Our servers are protected and you must get a key before first access. Information you must supply is minimum and will not be transferred outside Edipax

A screenshot of a web registration form titled "EdiPax". On the left side, there are four green buttons: "Find user", "Find company", "Generate certificate", and "Pending certificates". The main form area contains several input fields with labels and asterisks indicating required fields: "First name \*", "Second name \*", "Company \*", "EAN code \*", "Street \*", "Town \*", "ZIP \*", "Country \*", "Phone", and "E-mail \*". The "Country" field is a dropdown menu currently set to "Bermuda". The "EAN code" field contains the number "8383839380". The "First name" field contains "user" and the "Second name" field contains "sales". The "Company" field contains "Gartner Group".



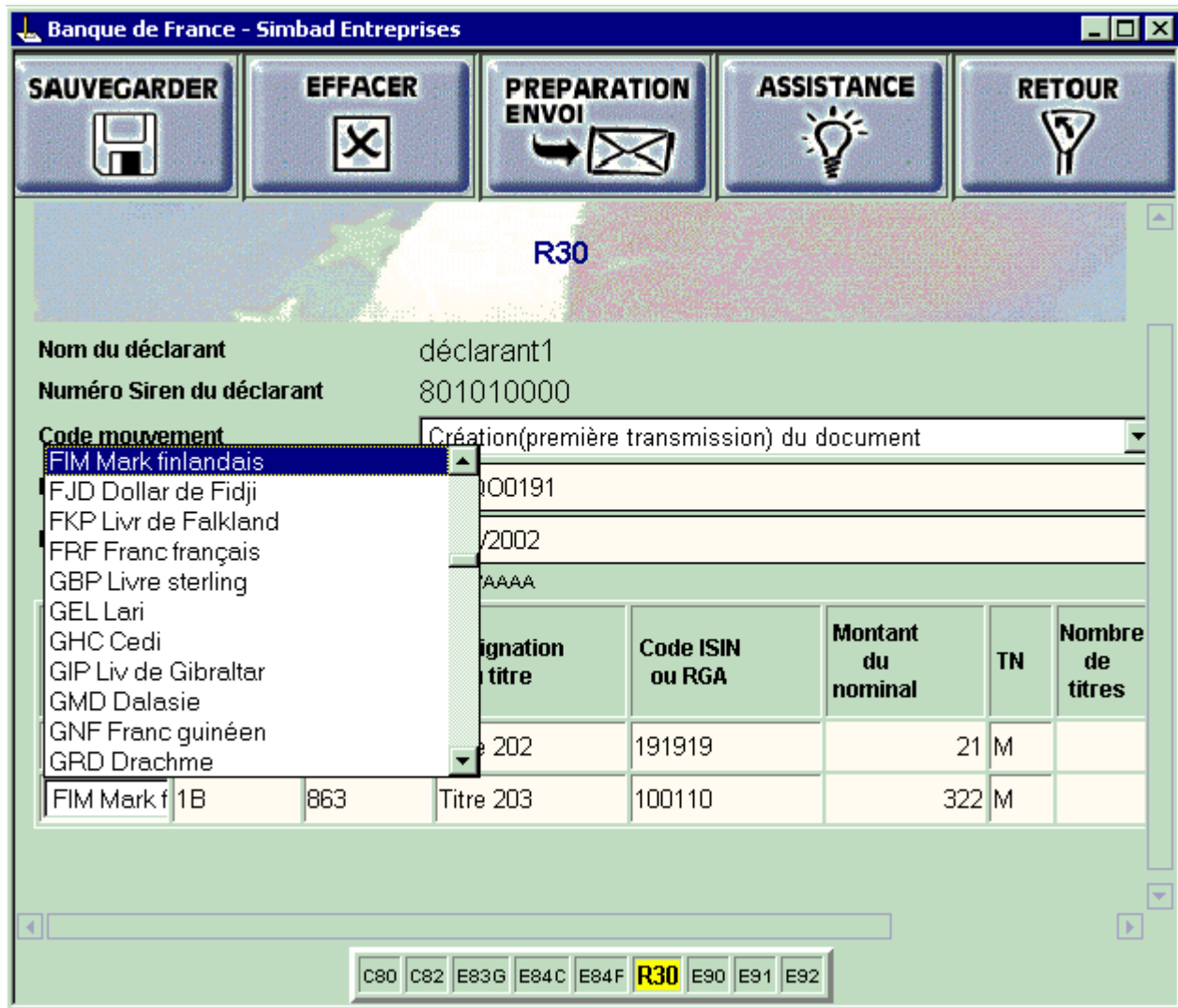
### How to - Install security

EdiPax will distribute a software private key to every partner. Double click the "p12" or "pfx" file we supply, input the password and install the key. From now on, you can access your box.



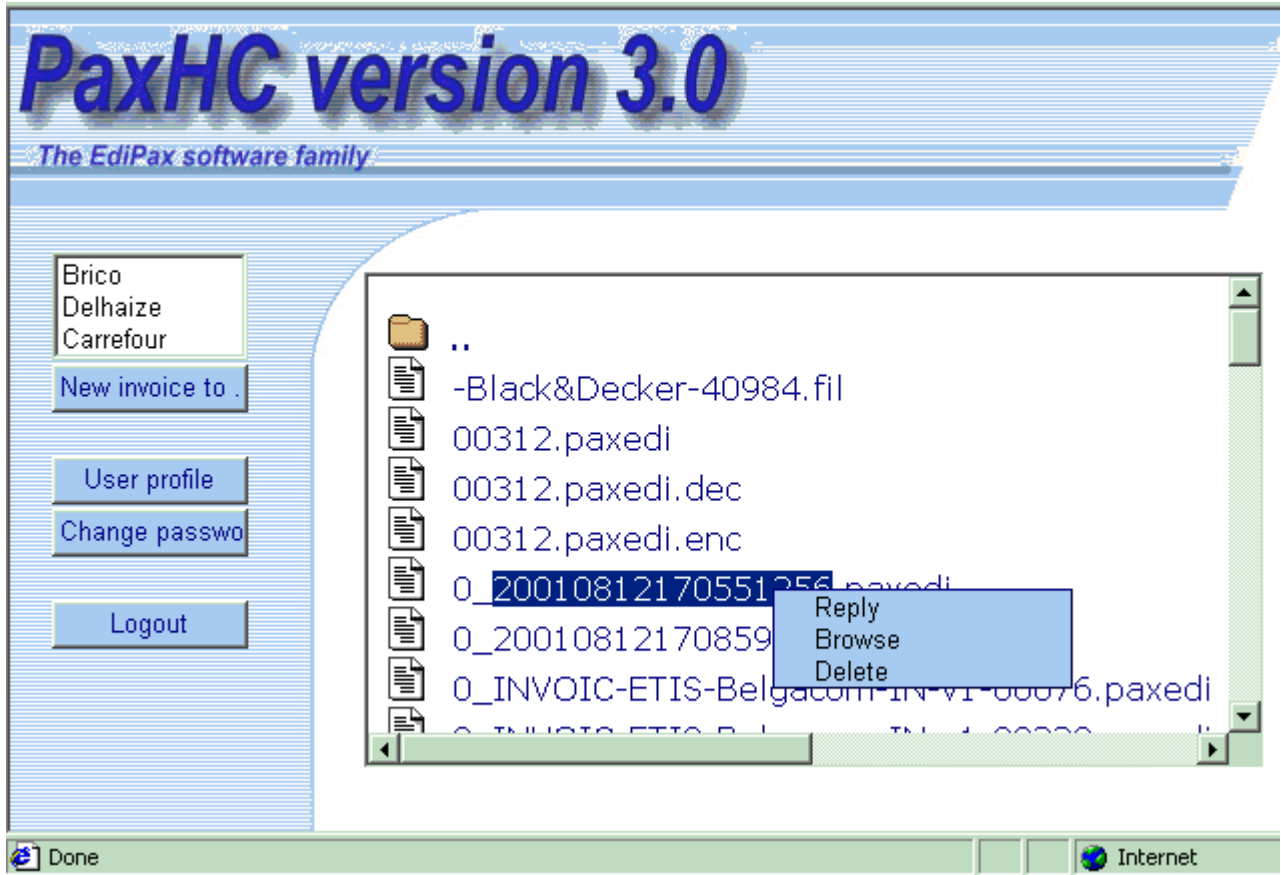
Net-EDI - Complex data model, WYSIWYG

Sophisticates, "multipage" / "multidocument" model, multilingual, high (WYSIWYG) quality data entry screen and printout (with Internet Explorer 5.5 enhanced printing support -new - print preview), (very) large interchange(s) (> 5 MEGAs) ... real life documents on the electronic highway. Our solution bypass the common low end product limitations !



### Net-EDI - In / Out boxes

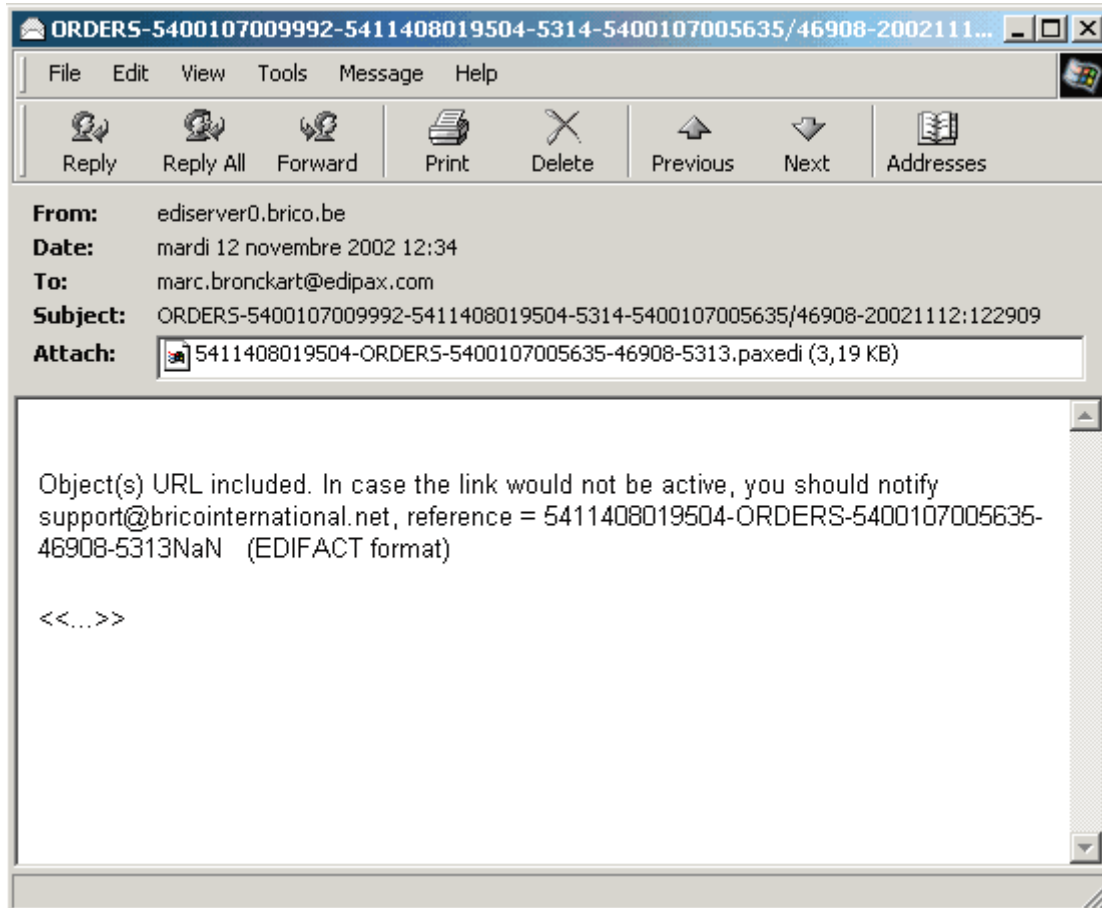
Once registered, every user (company) get access to a mailbox stored on HTTP server. The inbox contains messages received from partners. Just double-click the items to display/print them.



## Net-EDI - Email

You may also choose to work with email. Receive notification each time a message has been posted/received or receive a copy of the message itself directly in your email (Outlook, Outlook Express,... any email client) and display / print the content with the help of the [Pax EDI Browser](#)

You want to share mailboxes, improve email usage and productivity ? have a look at our [EdPax Electronic Extension](#) workstation



Net-EDI - create/Update a price catalogue (CDB)

Maintain customer specific price catalogue and email promotional offers to your best customers, locally and or remotely - multiuser, multi-purposes

product items are stored locally and/or remotely

- o syntax check : EDIFACT and business rules explicit error reporting
- o state of the art connectivity (secure, WebDAV,...)
- o user (attended) mode through ASP or server (unattended) local mode
- o Microsoft Office compatible (Excel, Access, SQL Server)

[More information about EdiPax-PRICAT](#)  
[The CDB solution slide show](#)

GTIN	HS	NbrUnit	Price	Status	Action	Article Name EN	Brand Name EN
5422238104429	P12A1021			69E	1	CHOCOLATE 150gr	SWEET
5422238104436	P12B1221			69E	1	SUGAR 21	SWEET
5422238112011	P12A1021			69E	1	SWEET V 225G	COOKWELL
5422238112066	P12B1221			69E	1	DE DESUGGAR V	COOKWELL
5422238112073	P12A1021			69E	1	DE COOKIES12 V	COOKWELL
5422238112141	P12A1021			69E	1	DE SIRUP RY V 225G	COOKWELL
5422238142841				69E	1	6 X DE SIRUPNETTE	COOKWELL
5422238102845		6			1		
5422238104429	P12A1021	1			1		
5422238202019				69E	1	2 X SWEET V 225G	COOKWELL
5422238112011	P12A1021	1			1		
5422238002015		2			1		
5422238202064				69E	1	2 X DE DESUGGAR V	COOKWELL
5422238002060		2			1		
5422238202071				69E	1	2 X DE COOKIES12 V	COOKWELL
5422238002077		2			1		
5422238202149				69E	1	2 X DE SIRUP RY V	COOKWELL
5422238002145		2			1		
15422238002012				69E	1	24 X SWEET V 225G	COOKWELL
5422238002015		24			1		
15422238002067				69E	1	12 X DE DESUGGAR	COOKWELL
5422238002060		12			1		
15422238002074				69F	1	12 X DE COOKIES12	COOKWELL

Net-EDI - Create a despatch advise

Starting from the information contained in the order, create the DESADV - input quantities and date. Press "submit", correct the errors, then post (HTTP, email,..) the document to the partner (server side).

BRICO *despatch advice*

Date and N

<b>Supplier</b> 5400107000012 <b>Party code</b> 5400107000012	<b>Invoiced to</b> 5400107000012 <b>Party code</b> 5400107000012 <b>VAT</b> 30369
<b>Buyer</b> 5400107000012 <b>Party code</b> 5400107000012 error should be 5400107101054	<b>Delivered to</b> 5400107000012 <b>Party code</b> 5400107000012
<b>Supplier Corporate Office</b> 5400107000012 <b>Party code</b> 5400107000012	<b>Buyer Corporate Office</b> 54001070 <b>Party code</b> 54001070

<b>Order nbr</b> from 54834 20010526	
---	--

<b>Document. date</b> 07/08/2001 15 :29:	<b>REQ.Deliv. date</b> 29/05/2001
--	-----------------------------------

Line	EAN	Qty Order	Qty Ship.	Unit	Amoun Order	Amoun Ship.	Price	Price Type	Price Mult	Price Unit	TAX
0001	5402829195948	4	0	PCE	1940	0	485	CP	1	PCE	21
0002	5402829196143	6	2	PCE	3600	1200	600	CP	1	PCE	21
0003	5402829196112	2	2	PCE	2230	2230	2115	CP	1	PCE	21
0005	5402829350699	4	4	PCE	996	996	249	CP	1	PCE	21
0007	5402829284017	4	1	PCE	576	244	244	CP	1	PCE	21
0009	5402829196006	2	2	PCE	1348	1348	674	CP	1	PCE	21
0010	5402829090090	4	4	PCE	488	488					

Net-EDI - Create an invoice (BMF100)

You may also create a document (invoice, ...) from scratch. Save keypunch with our strong, unique, dynamic HTML interface.

- input the VAT number and le program will load the company data if known
- input the EANCOM code to get product description from CDB
- input "10", the system will supply month and year ---> "10/10/2002"

The screenshot shows the EdIPax software interface with the following details:

**Supplier**  
 CUSTOMER CARE  
 Tel (0800) 25 232  
 VAT: BE455530509

**Buyer**  
 VAT: BE 454991663

**Delivered to**

<b>Service Completed</b>	11/06/2001
<b>Message date</b>	23/08/2001 13 :31:
<b>Delivery Date (actual)</b>	01/05/2001-31/05/2001
<b>Payment Date</b>	21/06/2001

Item	EAN code	IMD-F	Des. Qty	Inv. Qty	Inv Measure	Deliv. Da	Pr
1		Basispakket Isabel 4.0	2				

806

FAQ - Security, price,..

- Is transaction secure ? Access to the application is restricted through "HTTPS Strong Encryption". Only the station(s) with right private key(s) installed will be granted access. To further guarantee security, all the files stored are kept encrypted all the time, that is ... even EdiPax administrator cannot read them - DO NOT LOOSE YOUR KEY !
- Price - free of charge for non secure version - 500 EURO set-up cost for secure version. refer to [Net-EDI detail offer](#)
- ... more questions ? Refer to [Net-EDI FAQ](#)



© Copyright EdiPax, 1999-2003; E-mail: [info@edipax.com](mailto:info@edipax.com) - <http://www.edipax.com>